

# MAXIMUS lift

THE DERMATOLOGICAL REVOLUTION

The only one with Dual Tech Technology  
for **non-surgical lifting**



MICROFOCUSED  
ULTRASOUND

MACROFOCUSED  
ULTRASOUND

MICRONEEDLING  
RADIOFREQUENCY

FACIAL

SCALP

BODY

INTIMATE

# WHAT IS MAXIMUS LIFT?

Maximus Lift is a platform that combines **macro and micro-focused ultrasound with radiofrequency microneedling**, delivering a **non-surgical lifting effect** suitable for all areas of the body.

Ideal for treating:



skin laxity



localized fat



wrinkles



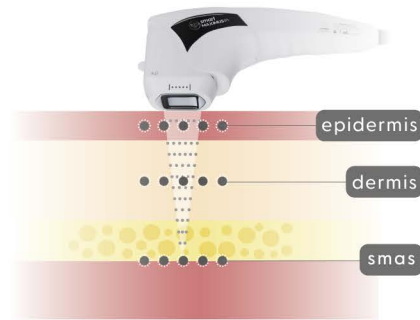
skin texture

## MACRO AND MICRO-FOCUSED ULTRASOUND

HIFU emits **high-intensity focused ultrasound waves** with controlled depth and precision, accurately targeting the treatment area.

High-intensity ultrasound waves create precise **points of thermal coagulation** in the targeted area through **controlled heating**. This process **contracts existing collagen fibers and stimulates neocollagenesis**.

Maximus Lift's **four-dimensional technology** delivers action across multiple layers – from the **SMAS** (Superficial Musculoaponeurotic System) to the **epidermis** – without causing visible damage to the skin.



## ★ SMART APPLICATORS



APPLICATOR  
MULTILINEAR

- Fast/slow mode
- Up to 300 shots per application
- Counted by lines
- Adjustable number of lines
- Energy adjustment from 0.1 to 2.0 J

Microfocused HIFU  
Sizes:

1,5 mm 3,0 mm 4,5 mm

Macrofocused HIFU  
Sizes:

6,0 mm 8,0 mm 10,0 mm

13,0 mm 16,0 mm

APPLICATOR  
POINT-BASED

- Scanning mode
- Frequency adjustment from 1 to 9 Hz
- Energy adjustment from 1 to 8 J

Microfocused HIFU  
Sizes:

1,5 mm 3,0 mm 4,5 mm

Macrofocused HIFU  
Sizes:

8,0 mm 13,0 mm



APPLICATOR  
VAGINAL

- Up to 17 linear points per shot
- Includes perineometer
- Adjustable rotation, angle, length, and distance
- Energy adjustment from 0.1 to 1.5 J
- Cartridge depth ruler

Microfocused HIFU  
Sizes:

3,0 mm 4,5 mm

Perineometer

An inflatable vaginal probe that informs the professional of the intensity of the contraction performed by the patient's pelvic floor muscles.

APPLICATOR  
BODY

- Fast/slow mode
- Higher number of thermal coagulation points: up to 576 points per cycle
- 360° treatment mode for a perfect fit on the abdomen
- Adjustable intensity from 1 to 20 J, based on the patient's sensory tolerance
- Up to 526 cycles possible in a 4x4 cm area

Macrofocused HIFU  
Sizes:

6,0 mm 8,0 mm 10,0 mm

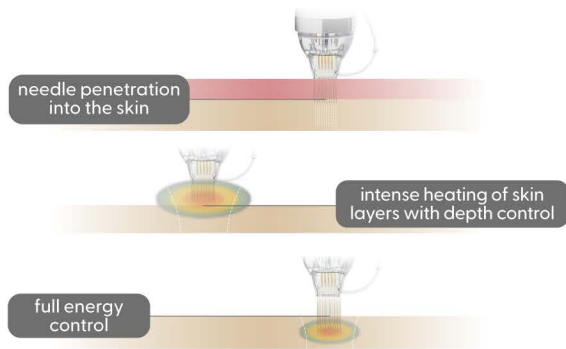
13,0 mm 16,0 mm



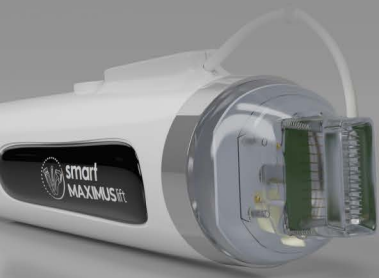
## MICRONEEDLING RADIOFREQUENCY

A powerful combination of fractional radiofrequency and microneedling.

Fractional radiofrequency stimulates the production of new collagen fibers and promotes tissue tightening, leading to visible rejuvenation. Microneedling enhances these results through controlled micro-injuries, resulting in firmer-looking skin and the lifting effect you've been dreaming of.



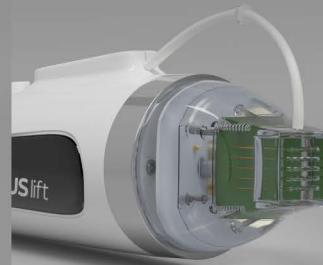
## MULTIPLE CARTRIDGES



10

NEEDLES

- Stretch marks;
- Deep wrinkles;
- Scalp treatments.



25

NEEDLES

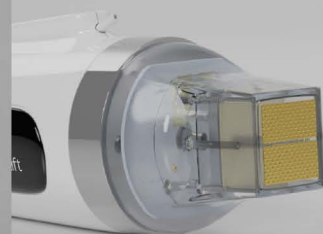
- Acne scars;
- Scalp treatments.



64

NEEDLES

- Rejuvenation;
- Skin laxity;
- Localized fat and cellulite.



378

NEEDLES

- Eyelid laxity;
- Sensitive areas;
- Active ingredient permeation.



## ADVANTAGES

### OPTIMIZE TREATMENT TIME

**Versatile programming:** automatic mode and quick mode. Different types of applicators ensure precise treatment across multiple layers of the skin.

### MORE VERSATILITY

Perform multiple procedures using a single platform – quickly, safely, and accurately.

## INDICATED FOR MULTIPLE PROCEDURES



**Facial**  
Lifting  
Facial wrinkles  
Buccal fat (bichectomy)  
Expression lines  
Double chin  
Tissue laxity



**Hair**  
Hair loss  
Follicular atrophy  
Scalp nutrition  
Active ingredient permeation



**Body**  
Tissue laxity  
Localized fat  
Body contouring



**Intimate**  
Urogenital atrophy  
Vaginal laxity  
Mons pubis  
Lubrication  
Strength



# MAXIMUS lift

## FAQ - Maximus Lift

### In which areas of the body can Maximus Lift be used?

**HIFU (High Intensity Focused Ultrasound)** can be used on the face, neck, décolletage, hands, body, and intimate areas.

**RFM (Microneedling Radiofrequency)** can be used on the face, neck, décolletage, hands, body, and scalp.

### Is it a safe procedure?

Yes. Both HIFU and RFM are considered safe procedures when performed by trained professionals following specific guidelines.

### How long is the recovery time?

After the procedure, the patient can return to normal activities as there is **no significant downtime**. However, it is recommended to **avoid sun exposure and follow professional aftercare instructions** for best results.

### What is the interval between sessions? How long until results appear?

**HIFU:** The interval between HIFU sessions may vary depending on the treatment protocol recommended by the professional. Typically, **4 to 6 weeks** between sessions is advised to allow proper recovery and evaluation of results before proceeding with another session. The **total number of sessions** depends on individual needs and treatment goals. Always follow professional guidance for optimal results and to avoid complications.

**RFM:** The number of sessions depends on the skin condition and desired outcomes. Generally, **3 to 5 sessions** are recommended, with intervals of **4 to 6 weeks** between each.

Scan the **QR code**

